

# appendix b exporting drawings to autocad

g e n e r a l C A D D p r o

**g**eneral CADD Pro exports its drawings to AutoCAD in DWG and DXF format.

Command	Meaning	Comment
XP	eXPort	Export the drawing in vector and bitmap formats.

## Exporting Drawings to AutoCAD

To export a drawing to AutoCAD, use the **XP** (eXPort) command, as follows:

1. In General CADD, open the drawing you want to export.
2. From the menu bar, select **File | Export**.



3. In the **Export File Type** dialog box, select **Vector**.

---

**TIP** Although General CADD can export the drawing in bitmap formats (JPEG, TIFF, BMP, or PNG), do not use these for translation between CAD programs. When a drawing is converted to bitmap (a.k.a. raster), all discrete objects are changed to unintelligent dots.

---

# Table of Contents - Appendix B

Exporting Drawings to AutoCAD . . .	129
Object Translated Correctly . . .	131
Objects Translated Differently . . .	131
Not Yet Tested . . .	131

---

## Copyright Information

This book is covered by copyright. As the owner of the copyright, upFront.eZine Publishing, Ltd. gives you permission to make electronic and print copies. You may not, however, claim authorship or ownership of the copies. All chapters must be copied and distributed intact, including this page containing the copyright information. To support the work of the author, a payment of US\$25.00 can be made by:

### Check or Money Order

- US funds drawn on a bank with its address in the USA (US\$25.00).
- Canadian funds drawn on a bank with a Canadian address (CDN\$35.00 incl. GST).
- British funds drawn on a bank located in Great Britain (15.00).

Mail your payment to:

"Learn General CADD Pro"  
34486 Donlyn Avenue  
Abbotsford BC  
V2S 4W7 Canada

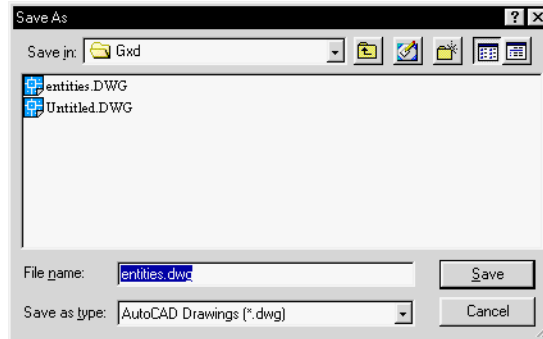
### PayPal

- To the account of [editor@upfrontezine.com](mailto:editor@upfrontezine.com) at [www.paypal.com](http://www.paypal.com). You can copy and paste the following URL into your browser:  
<https://www.paypal.com/affil/pal=ralphg%40xyzpress.com>.

Copyright © 2002 by upFront.eZine Publishing, Ltd. All rights reserved worldwide.

4. In the **Save As** dialog box, you can choose either of two file formats. Click the **Save as type** list box to see the options:

- **AutoCAD Drawings (\*.dwg)** exports the drawing in AutoCAD's native file format.
  - **AutoCAD Drawings (\*.dxf)** exports the drawing in drawing interchange format.
- In most cases, you would select *.dwg* format; select the other *.dxf* format only if the software cannot import DWG.



5. Select the correct folder with the **Save in** list box, and, if necessary, change the name of the drawing in the **File name** text box.

6. Click **Save**. General CADD exports the drawing in AutoCAD Release 12 format, which can be read by any release of AutoCAD and LT from Release 12 onwards to today's latest release.

---

**TIP** General CADD's **Draw** menu contains several commands that draw the objects as simple lines:

- L2** Double Lines
- RE** Rectangle
- RP** Regular polygon

---

### Object Translated Correctly

Point (size is set to 2; mode is set to 2)  
Line.  
Arc  
Circle

### Objects Translated Differently

The following General CADD objects are converted to curve-fitted polylines:

- Ellipse
- Bezier curve
- Curve
- Quadratic curve

### Not Yet Tested

- Layers
- Hatch Patterns
- Linetypes
- Text

### Feedback

I welcome your feedback for correcting and improving the text. Send your email to [editor@upfrontezine.com](mailto:editor@upfrontezine.com).

Visit the *Inside General CADD Pro* book Web site at [www.upfrontezine.com/gcadd](http://www.upfrontezine.com/gcadd) and the General CADD Web site at [www.generalcadd.com](http://www.generalcadd.com).